

Towards skills certification and sustainable employment

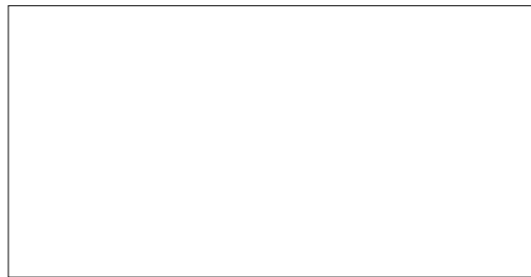


The effects of the ACCES accompaniment :

- The beneficiary** is trained to the appropriate skills which come from the analysis of the actual work shared between himself, the professional development advisor and the tutor. The skills can be certificated.
- The tutor** is called to formalize his professional skills to be able to transmit them. Thanks to the work analysis he can get conscious of key skills and improve his teaching practice.
- The company managers** get useful information from ACCES accompaniment helping them to improve the new employees training process

ACCES is an innovative way to integrate and to qualify new workers and job seekers inside the workplaces

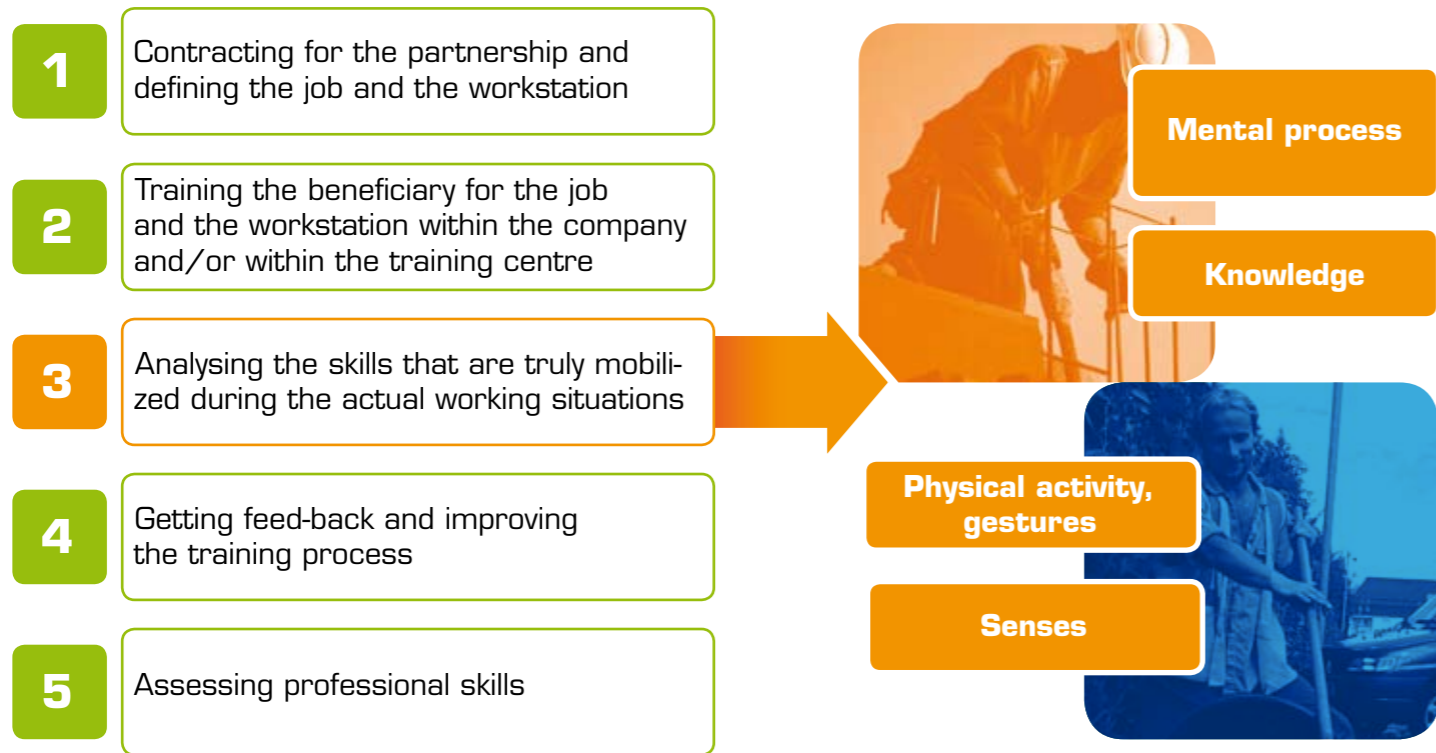
A European cooperative project



Accompaniment for reassuring employment



The five steps of the ACCES intervention Analysis of actual working situations



The observation of the actual work with ACCES tools permits to define the appropriate skills involved in working situations and to design more efficient training strategies.

The ACCES method is the result of a European Project from the Lifelong Learning Programme **LEONARDO DA VINCI**. The aim of the ACCES method is to help people who have a distance to the labour market and are not able to find a job by a usual way.



ACCES is a personalized training process shared between a beneficiary willing to get sustainable employment, a professional development advisor trained on the ACCES method and a tutor within a company.

The **ACCES** goal is to accompany the beneficiary during his integration period within the company. The accompaniment aims to explain to the beneficiary the activities and the tasks that he has to perform and to solve any kinds of problem related to his integration that could be encountered.

ACCES is based on the analysis of the actual working situations and provides the professional development advisor and the in-company tutor with innovative tools